

For logging into Mojobanka application using:

1. certificate in file please follow instructions in section **A** (link [here](#))
2. certificate on smartcard please follow instructions in section **B** (link [here](#))

### A – procedure with certificate in file

This procedure will be used:

1. if it is first login into Mojobanka and path to the certificate is not entered
2. if the path to the certificate has disappeared (because of temporary internet files deletion, internet browser update, etc.)
3. if there is the error message: „Could not open the file with the certificate. Check the path and entered password“ \*

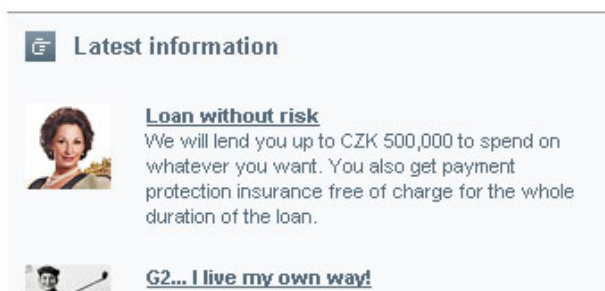
\*This message might be appeared in two cases:

- a. invalid password for the certificate is entered (*application is for capital/small letter sensitive, please make sure that "Caps Lock" key is active/inactive*)
- b. invalid path to the certificate is entered

### Login procedure with the certificate in file

If the download of the certificate in [Certification wizard](#) was successfully completed, it is necessary to specify the path to the certificate on the login screen to Mojobanka. After entering the path to your certificate, it will be saved into the memory of your internet browser and next time, when you try login to mojobanka, it will be already filled in. Then only login password will be required.

1. choose the button **Other Certificate** and **Browse** on Mojobanka login screen in the case that there is other file entered or choose button **Browse** in the case that certificate field is empty. Button **Browse** allows you to find and select your certificate located on your harddrive.



**Latest information**

**Loan without risk**  
We will lend you up to CZK 500,000 to spend on whatever you want. You also get payment protection insurance free of charge for the whole duration of the loan.

**G2... I live my own way!**



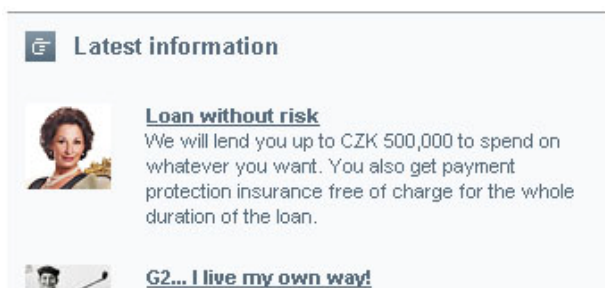
**Certificate in file** | Certificate on smart card

Certificate: C:\KBcertifikat\Novak\_Karel.p12

**Other certificate**

Password:

**Log in**



**Latest information**

**Loan without risk**  
We will lend you up to CZK 500,000 to spend on whatever you want. You also get payment protection insurance free of charge for the whole duration of the loan.

**G2... I live my own way!**



**Certificate in file** | **Certificate on smart card**

Certificate:

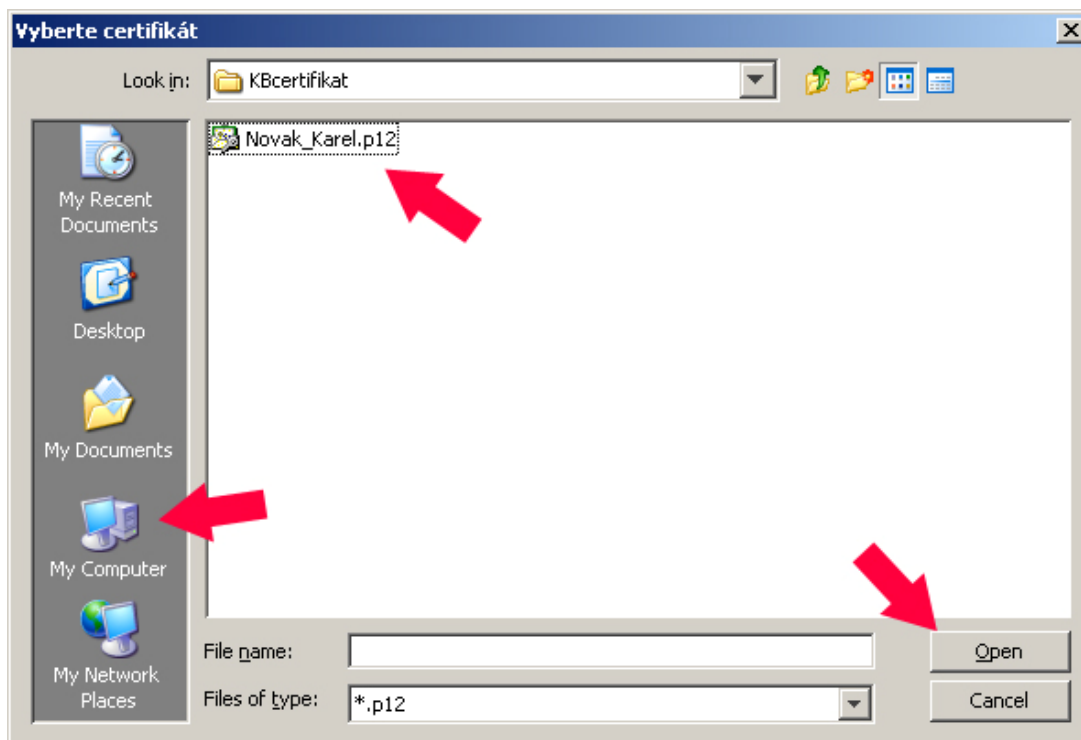
**Browse**

**Original certificate**

Password:

**Log in**

- if you click on **Browse** button you will see the window for searching your certificate on your harddrive


**certificate selection:**

- in the left frame (see the picture) choose the option Computer or This Computer.
- choose local disk C: . Sometimes it is named as: „System C: , Windows C: etc“.
- open the folder „Documents and settings“ or „Users“
- there you will find the user folder named as your user login to the computer (your name, admin, administrator, etc.). Open this folder.
- open the folder „KBcertifikat“
- choose the file with your certificate and click on button **Open**

**IMPORTANT!**

Generally the file with the certificate is located in folder **C:/Documents and settings/name of users profile/KBcertifikat**. In the case of Windows Vista operating system it is located in **C:/Users/ name of users profile /KBcertifikat**.

- After the certificate selection, you have to enter security password for the certificate and click on button **Login**. The security password was chosen during downloading procedure. It is not the one-time SMS password for downloading the certificate or the password for the certificate revocation.

If the request for entering the SMS authorization code appears, after receiving it to your mobile phone please enter it to assigned field and click on **Login** button. Afterwards you will be logged in to the application.



**Certificate in file** | Certificate on smart card

A single-purpose SMS code has been sent to you. After you receive it, please enter it here:

**Log in**

### B – procedure with certificate on smart card

This procedure will be used:

1. in the case that this is the first time login to Mojobanka with this type of the certificate

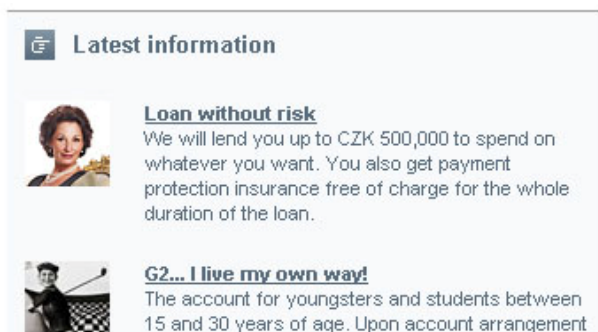
### Login procedure with the certificate on smart card

There are two possible steps that have to be done in the case you would like to login successfully. If you are trying to login to Mojobanka on your computer for the first time, you have to download and install smartcard reader drivers first (step 1). If the installation is already done and smartcard reader is active, you can use the PIN code to login to Mojobanka (step2).

1. you can download the smartcard reader installation on our mainpage <http://www.mojobanka.cz> / link Download / section Applications, update files / Installation of smart card reader – direct link is [HERE](#)

Help guide and more detailed description of smartcard reader installation could be found [HERE](#).

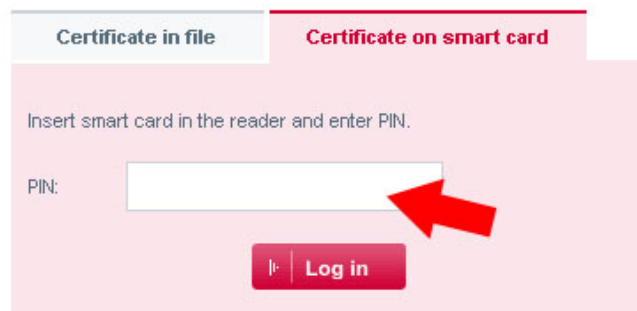
2. in the case that the smartcard is already installed you can login to Mojobanka. Choose option „Certificate on smartcard“, find smartcard reader PIN code in the envelope that was given to you after the contract subscription, enter this PIN code into the empty field and click on Login button.



**Latest information**

**Loan without risk**  
We will lend you up to CZK 500,000 to spend on whatever you want. You also get payment protection insurance free of charge for the whole duration of the loan.

**G2... I live my own way!**  
The account for youngsters and students between 15 and 30 years of age. Upon account arrangement



**Certificate in file** | **Certificate on smart card**

Insert smart card in the reader and enter PIN.

PIN:

**Log in**